

Purpose

Working together to enrich the health and well-being of every life we touch.

Mission

EvergreenHealth will advance the health of the community it serves through dedication to high-quality, safe, compassionate and cost-effective health care.

Vision

EvergreenHealth will create an inclusive community health system that is the most trusted source for health care solutions.



2023 Community Annual Report EvergreenHealth & EvergreenHealth Foundation

Message From the CEO & Board Chair



Dear neighbors,

As a community-owned health system, EvergreenHealth serves a special role in our community, providing access to high-quality care and services to all residents and families across our growing region. Because of our commitment to you, we especially look forward to our annual opportunity to share the ways we are working to fulfill our mission as your public hospital district.

Our 2023 Community Annual Report highlights the ways we continue to enhance our care and services while planning for our community's future needs. As we grow with you, it will always be our focus to ensure equitable access to excellent, comprehensive care, services and programs delivered by skilled doctors in the safest setting possible.

Being your public hospital district means that we're accountable to all residents across our vibrant region. Beyond serving patients who come to EvergreenHealth for care, we are dedicated to improving the health of our broader Eastside community. As you'll read in this year's Community Annual Report, youth mental health is a growing focus area, and through our levy-funded programs and community partners, mental health professionals reached hundreds of local K-12 students and their families to spread education and awareness of available mental health resources.

In addition, we took steps to meet the community's behavioral health needs by expanding mental health care at EvergreenHealth Primary Care, Canyon Park.

We also continue to make strides as we respond to the industry-wide challenges of navigating economic forces that are straining hospitals and health systems financially. As we've worked collaboratively to find cost-effective solutions, we commend every physician, staff member and volunteer who has been part of our collective effort to address these challenges, while ensuring we remain pointedly focused on our responsibility to safety and quality.

On behalf of our 5,000-person-strong hospital system committed to working together to enrich the health and well-being of every life we touch, thank you for entrusting us with your care. We remain grateful for the opportunity to provide excellent care for you and your family.



Ettore Palazzo, MD
CEO, EvergreenHealth



Virgil Snyder
Chair, EvergreenHealth
Board of Commissioners

Table of Contents

3 2023 Highlights & Service Stats	15 Thanks to Our EvergreenHealth Foundation Donors
5 Community Benefit Spotlight	17 A Family Commitment to Community Health
11 EvergreenHealth Financial Report	18 Message from the EvergreenHealth Monroe Foundation Board Chair & Director
13 Message from the EvergreenHealth Foundation Chief Philanthropy Officer & Board Chair	19 Thanks to our EvergreenHealth Monroe Foundation Donors
14 EvergreenHealth Foundation Financial Report	20 2023 Board of Commissioners

2023 Highlights & Service Stats

Named Washington's Best Hospital for Stroke Care

EvergreenHealth was ranked #1 in Washington for Stroke Care by Healthgrades, the leading marketplace connecting doctors and patients. The ranking reflects our commitment to providing superior stroke care to patients on the Eastside and beyond.



Among America's Top 50 Hospitals

For the third year in a row, Healthgrades ranked EvergreenHealth among America's Top 50 Hospitals, placing EvergreenHealth Medical Center in the top 1% of the nearly 4,500 hospitals assessed nationwide for consistent superior clinical performance.



Recognized by Healthgrades for Patient Safety Excellence

EvergreenHealth was the Puget Sound region's only hospital to be recognized by Healthgrades for its Patient Safety Excellence Award, which places the health system in the top 10% of short-term acute care hospitals evaluated as part of the Healthgrades study.



New Urgent Care Clinic in Canyon Park

The opening of an urgent care clinic in Canyon Park expanded the care and services EvergreenHealth provides to residents in Bothell. This new clinic is the health system's eighth urgent care location and provides services for serious but non-life-threatening illnesses and injuries.

Total Joint Replacement Program Recognized as Only DNV Center of Excellence in Greater Seattle Area

EvergreenHealth's Total Joint Replacement Program has been recognized as a Center of Excellence for Advanced Hip and Knee Replacement by Det Norske Veritas (DNV), a hospital accreditation organization through the Centers of Medicare and Medicaid (CMS). It is the only joint program in the Greater Seattle Metropolitan area to earn the distinction. This recognition affirms EvergreenHealth's excellence in orthopedic surgery within the scope of hip and knee arthroplasty and related procedures.

EvergreenHealth Ranked No. 1 in Washington for Pulmonary Care

Healthgrades recognized EvergreenHealth as the No. 1 hospital in Washington for pulmonary care, a testament to the hospital's continued commitment to top-quality patient care. Dr. Sharukh Lokhandwala says the health system is focused on enhancing patient care and experience. The rankings validate the work they are doing and inspire doctors to keep advancing.

Earned 'A' Hospital Safety Grade – for the 9th time!

EvergreenHealth received its 9th consecutive "A" grade for patient safety from the Leapfrog Group, a leading independent national nonprofit watchdog for hospital quality and safety. This validates the health system's emphasis on safety as a foundational part of the EvergreenHealth culture – every doctor, provider, staff member and volunteer across the health system keeps patient safety as a shared priority.



Radiation Oncology Group Recognized as Center of Excellence by Boston Scientific

Boston Scientific recognized EvergreenHealth's Radiation Oncology Group as a Center of Excellence for the use of the innovative product SpaceOAR Hydrogel. Dr. R. Alex Hsi was also honored in his work with the SpaceOAR Hydrogel, being one of just a few doctors in the Pacific Northwest region who is a specialist in using the product.

The First-Ever Endoscopic Liver Biopsy on the Eastside

Made possible by the opening of a Gastroenterology & Advanced Endoscopy Care practice, EvergreenHealth's Dr. Rajnish Mishra, head of the Gastroenterology & Advanced Endoscopy practice, completed three procedures for one patient that had previously not been performed on the Eastside.

Sports, Spine and Orthopedic Care Become Available in Canyon Park

Two EvergreenHealth satellite clinics opened in Canyon Park this year: one for orthopedic and sports care, and the other for sports and spine care. It's been exciting to expand orthopedic and spine services to make this care more accessible to our growing community.

Physicians Honored with 2023 Excellence in Medicine Awards

The 2023 King County Medical Society (KCMS) Excellence in Medicine Awards honored EvergreenHealth physicians and the entire Evergreen Emergency Services Group, recognizing outstanding physicians in the community who demonstrate leadership, high-quality care and dedication to their patients. Mark Vossler, MD, was honored with the KCMS Physician Advocacy Award, and the Evergreen Emergency Services Group, which practices at all EvergreenHealth emergency departments and urgent cares, was honored with the KCMS Independent Medical Group Award.

EVERGREENHEALTH KIRKLAND BY THE NUMBERS

Outpatient Visits	446,478
Primary Care Visits	329,210
Emergency Department Visits	60,336
Total Surgeries	11,330
Adult and Pediatric Admissions	16,418
Home Health Patients	9,691
Babies Delivered	4,448
Hospice Patients	2,979
Health Education Classes	1,352
Hours of Volunteer Service	42,296

EVERGREENHEALTH MONROE BY THE NUMBERS

Emergency Department Visits	18,952
Outpatient Visits	14,605
Addiction Recovery Patient Days	5,780
Critical and Acute Patient Days	4,051
Total Surgeries	1,238
Adult and Pediatric Admissions	991
Recovery Center Admissions	696
Detox/Rehab & CUPS Admissions	443
Gastrointestinal Procedures	417
Hours of Volunteer Service	455





Community Benefit Spotlight

Supporting patients and families with levy-funded programs

As a public hospital district, EvergreenHealth provides a special benefit to the greater community. Every year, the

organization is entrusted to responsibly invest the community’s resources by using tax levy funds to support important community health and wellness needs.

In 2023, more than \$6.2 million in levy funds were invested back into community health through a range of programs designed to provide quality health care, services and resources – often at no charge to the community.

Community Healthcare Access Team

The levy-funded Community Healthcare Access Team (CHAT) serves low-income, underinsured and uninsured residents throughout the hospital district. In 2023, CHAT social workers served as the point of contact for community residents to obtain health care information, access resources/ referrals, and enroll in health care coverage. CHAT social workers also helped local high school students learn about mental health and gave them the tools to access further help and counseling for both students and families.

Among these initiatives:

- CHAT was invited to participate in a toy giveaway event in December with El Centro Cultural Mexicano. The event was expected to have 700 guests, but by the end of the 3-hour event, there were over 1,000 people in attendance. The event had a station for vaccines and a resource fair. The CHAT Outreach Liaison connected with 200 families, 150 of which accepted a CHAT brochure and phone number with a brief overview of the open insurance enrollment period for a QHP plan.
- Thanks to the new expansion of the Washington Exchange, CHAT was able to help two Hispanic families enroll in health care insurance through the Washington Health Plan Finder. The adults in the families had never had the opportunity to be insured in the United States before. They feel now more at ease knowing that they will be able to address their health needs and access important preventive care, while keeping their families out of medical debt.
- The Juanita High School-based CHAT social worker visited seven 9th grade health classrooms to present on mental health, reaching over 400 students.

“Some of the most rewarding work I do is with patients who have suffered a stroke and have cognitive challenges. Taking the time with patients to slowly explain the process of obtaining paid medical leave or disability income when others rush through the process makes a great difference to the patient.” – CHAT social worker



In 2023, CHAT social workers and staff:

Welcomed **3,124** unique interactions with community members

Completed a total of **6,872** interactions with community members

Provided **40** groups/outreaches

Provided discharge planning services to **57** socially complex orthopedic patients to avoid extended hospitalization and delays in discharge

Connected with **405** students and completed **2,895** interactions with students or on behalf of students

EvergreenHealth Community Education Services

EvergreenHealth’s Community Education Services provides hundreds of free and low-cost seminars, workshops and health education classes each year that offer resources geared toward helping our community members live well. Whether it is cooking demonstrations to inspire nutritious eating, exercise groups, emergency preparedness or parenting classes, the health system offers a wide range of courses to address our community’s diverse needs and interests.

Among the year-round programs, EvergreenHealth’s Childbirth and Early Parenting Education programs offer dozens of classes to help families navigate the joys and challenges of parenting. Its Parent-Baby Groups provide education and support through facilitator-led discussions that encourage new families to share successes and challenges on a range of topics, including feeding, relationships, postpartum adjustment, developmental stages, sleep and more.

In 2023, EvergreenHealth Community Education Services offered **114** classes, programs and events, serving **1,372** total participants



Expanding Behavioral Health at Canyon Park

Behavioral health is an essential line of service that levy funds are helping to expand in our community. In 2023, that expansion began with the hiring of mental health professionals available to patients at EvergreenHealth Primary Care, Canyon Park. The first patient was seen in July, and a total of 228 patients received care in 2023. Here’s what a few patients had to say:

- “I was never able to see these strengths about myself, and [therapy] has made a huge difference in how I see the world and myself.”
- “Thank you for listening to me and helping me to get connected to a psychiatrist. I feel like I have finally found what works for me, and it has changed everything.”
- “Thank you for everything you have done for me. I feel so much better and feel like life is totally different from how it was a few months ago. From learning grounding skills to treating myself better, I am feeling good about what’s next.”



The initiative at Canyon Park is just a first step. With further prioritization and investment, we look forward to expanding behavioral health services to the broader community.

Supporting Eastside Students with Education & Mental Health Resources

A firsthand look at careers in STEM

In 2023, EvergreenHealth and Juanita High School continued their decade-plus collaborative partnership to offer a firsthand look at careers in Science, Technology, Engineering and Math (STEM).

With help from the community's levy dollars, Juanita High School's Global Health STEM program regularly brings EvergreenHealth leaders and physicians to campus to present to students on an array of health care topics, including radiology, podiatry and reproductive health.

The interactive sessions provide students with insight into health care-related career fields, encouraging them to ask questions and immerse themselves in learning about career paths in science, health care and many more industries.



Kevin Clemente, Juanita High School

"This program has done a lot for students," said Kevin Clemente, who teaches Biology and Anatomy & Physiology at Juanita High School. "It gives direct insight into diverse STEM careers and industries that we as teachers aren't able to offer. Students can explore options and learn what they like or dislike about a particular field – before they get to college, where changing fields becomes complicated and costly. Having more direct knowledge upfront helps them make an informed decision after high school."



Expanding mental health support to K-12 students

In 2023, EvergreenHealth levy dollars continued to provide funding for mental health support in Northshore schools. While 2022 efforts focused on high school students, access in 2023 expanded to include elementary school students, covering students from kindergarten through 12th grade.

Rick Farrell, director of Student Services at Northshore School District, noted that earlier access to mental health services can work to prevent larger issues when kids get older – or help them build familiarity, so they feel comfortable seeking mental health services when they reach high school.

He also noted that offering services on school grounds, and often during the school day, helps ensure students are getting the help they need and reduces the burden on parents to find, schedule, and transport their children to appointments elsewhere.

"It's beneficial to families and takes the task off their plate," Farrell said. "Students are usually more comfortable with their school counselor, and we're able to give a warm handoff to a therapist in a familiar setting. We're reducing stigma by raising the topic early and making the process as accessible as possible for students and families."

FOR THE 2023-24 SCHOOL YEAR, NORTHSHORE SCHOOL DISTRICT MENTAL HEALTH THERAPISTS:

Served **1,446** students

Held **2,961** total visits



Partnership with NAMI Eastside

In 2023, EvergreenHealth continued to partner with NAMI Eastside to expand mental health education and access for youth in our community.

NAMI Executive Director Marc Oommen highlighted the organization's Youth Mental Health Conference as one of many initiatives that worked to improve mental health awareness and access for Eastside youth.

Held in Redmond, the theme for the 2023 conference was "Speak Your Mind." Youth presenters and advocates spoke about the work they do to promote youth mental health and wellbeing.

This year included a resource fair for community partners

to come together, network, and share their work with parents, educators, students and other providers. There were 268 registrants for the conference, which doubled 2022's numbers, and included 74 youth registrations.

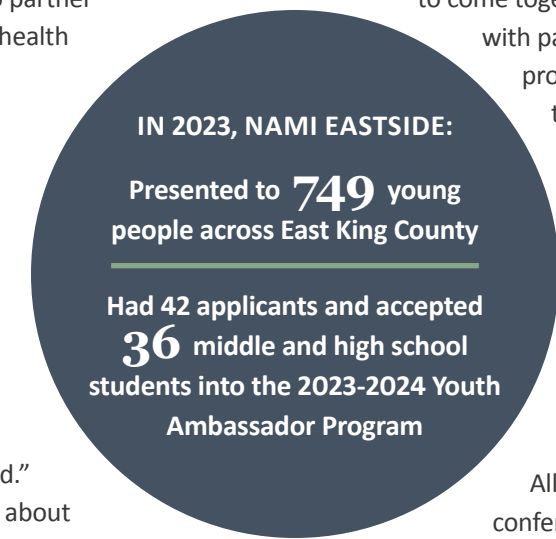
The conference was a great opportunity to promote other EvergreenHealth-supported programs like the Youth Ambassadors, Cope2Thrive, Teen Mental Health First Aid and Ending the Silence.

All attendees who completed the post-conference survey reported they felt they had better coping skills and better understanding of mental health conditions. They also reported feeling they have more knowledge of mental health resources.

IN 2023, NAMI EASTSIDE:

Presented to **749** young people across East King County

Had **42** applicants and accepted **36** middle and high school students into the 2023-2024 Youth Ambassador Program



Supporting Seniors Through Programming and Community



Northshore Senior Center

In 2023, EvergreenHealth continued to partner with Northshore Senior Center (NSC) to support the Bothell-based nonprofit’s mission to promote healthy living and wellbeing in the community through programs, services, resources and civic engagement.

These programs focus on the importance of self-care, acknowledge the strengths and skills elders have developed, and offer additional tools to help them support their health and well-being as they face changes that come with aging, including role changes with retirement and caregiver responsibilities, relocating, and health changes.

One such program is Enhance®Wellness (EW), an evidence-based program that connects participants with a personal health and wellness coach to improve physical, emotional and social well-being.

One gentleman had been through multiple life transitions and losses during the COVID-19 pandemic. He recognized he felt some depression and was working with his primary care provider. He thought Enhance®Wellness (EW) would help him to get back on track to accomplish things he wanted to do. He worked with his coach to create a plan and action steps that he made great progress with over a six-month period. At his six-month review he said he felt ready to graduate from the program and had things in place to continue his self-care. He said, “EW was a good thing for me to participate in; I needed it to give me a little structure to reach my goals.”

A caregiver and EW participant shared: “The EW Program has given me greater confidence in reaching out to participate in more activities to support my mental, emotional and physical health. The program came into my life when I needed it coming out of COVID and experiencing depression, isolation, and my expanding role as caregiver. I’m very grateful for the EW program and senior centers that have helped me to realize that I am not invisible, but viable and still useful and that we matter.”

Through EvergreenHealth’s partnership with NSC, more seniors feel seen, valued, supported, and empowered through participation in their community.

Served **1,571** seniors and their families with **7,912** touchpoints. A total of **3,149** attended programs and classes.

Helped **702** seniors with **3,368** total touchpoints maintain and improve their mental and emotional well-being through support groups, personal consultations, meditation, conversation groups and more.

Served **243** family caregivers with **616** touchpoints via programming, consultations and services.

Served **126** family caregivers with telephonic wellness checks and in-person visits.



EvergreenHealth Geriatric Care

EvergreenHealth Geriatric Care is an interdisciplinary team of board-certified specialists, including geriatricians, nurses, social workers and pharmacists with special training and experience to care for seniors. Their mission is to provide comprehensive care for patients 65 and over, addressing medical, social, mental health, and emotional needs.

Over the past year, Geriatric Care has increased the wellness visit program with an emphasis on preventive measures to enhance the overall health and well-being of patients. In 2023, wellness visit volume tripled compared to previous years.

Wellness visits are available without a referral. They focus on both preventive measures and addressing care gaps. Screenings covered include depression, fall risk, medication review, breast cancer, colorectal cancer, pain assessment, eye and hearing exam, social risk factors, home safety screening, activities of daily living (ADLs), instrumental activities of daily living (IADLs), cognitive function and advanced care planning.



“Taking the time to cover all these topics with seniors is what sets us apart at Geriatric Care,” said Victoria Marxen, MD, Geriatric Care physician at EvergreenHealth. “We’re able to identify gaps in care and potential risks before they affect a person’s quality of life.”

“Taking the time to cover all these topics with seniors is what sets us apart at Geriatric Care,” said Victoria Marxen, MD, Geriatric Care physician at EvergreenHealth. “We’re able to identify gaps in care and potential risks before they affect a person’s quality of life.”

The team of social workers also provides valuable support to patients and their families as they navigate the challenges of managing dementia. They assist in finding suitable living arrangements for our patients and connect them with community resources. Dedicated pharmacists and nurses ensure a smooth transition of care by coordinating follow-up appointments and medication management after hospital discharge.



EvergreenHealth Financial Report

In 2023, EvergreenHealth continued investing in programs and services to pursue its mission to advance the health of the community, while continuing to address economic forces that are financially straining hospitals and health systems across the country.

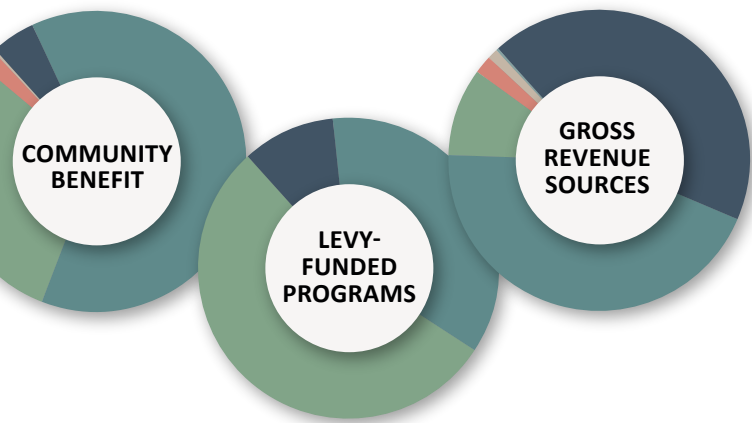
According to the Washington State Hospital Association, hospitals in Washington sustained \$1.74 billion in operating losses, which were not as extensive as 2022's financial losses of \$2.1 billion statewide.

EvergreenHealth experienced a \$70.1 million loss, while continuing its accountability to invest in community benefit services, including charity care and subsidized health services. It also contributed to necessary capital improvement projects across the EvergreenHealth system to meet patients' and families' evolving health and wellness needs.

Community Benefit		
	PERCENTAGE	IN MILLIONS
Charity Care Costs	10.1%	\$4.6
Subsidized Medicaid Costs	59.2%	\$27.2
Levy Programs (before levy funding)	28.8%	\$13.2
Subsidized Health Services	1.7%	\$0.7
Sponsorships	0.2%	\$0.1
TOTAL	100%	\$45.8

Levy-Funded Programs		
	PERCENTAGE	IN MILLIONS
Community Programs	10%	\$0.6
Senior Programs	36%	\$2.2
Clinical Programs	54%	\$3.4
TOTAL FUNDS PROVIDED	100%	\$6.2

2023 Gross Revenue Sources		
CATEGORY	PERCENTAGE	IN MILLIONS
Commercial	43.2%	\$1,086.0
Medicare	44.1%	\$1,110.3
Medicaid	9.4%	\$235.7
Other Operating	2.1%	\$52.4
Self Pay	1.0%	\$24.4
Tax Revenue for Levy Programs	0.2%	\$6.2
TOTAL GROSS REVENUE	100.0%	\$2,515.0



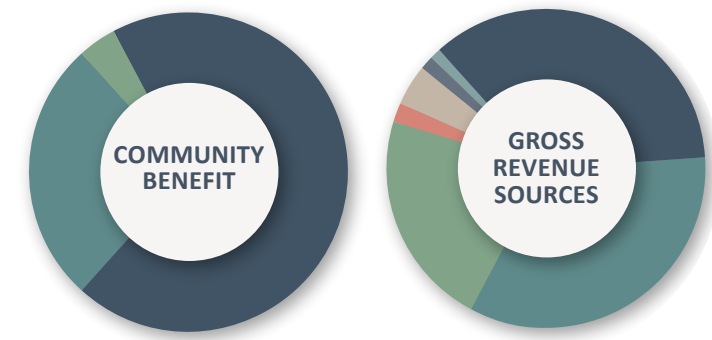
2023 Significant Capital Projects	
	IN MILLIONS
PRIMARY PROJECTS:	\$25.9
Family Maternity Center Renovation	
Linear Accelerator	
Canyon Park Expansion	
EPIC Implementation	
Central Garage	
OTHER:	\$11.1
Other Clinical Equipment and Facility Improvements	
TOTAL:	\$37.0

2023 EvergreenHealth Revenues and Expenses	
SOURCES OF REVENUE	IN MILLIONS
<i>In 2023 we billed patients for:</i>	
Inpatient and outpatient care	\$2,456.2
Less amounts written off for discounts to payers including commercial insurances, Medicare and Medicaid	\$1,536.6
Less amounts written off to charity care and bad debt	\$60.8
Net Revenue.....	\$858.8
<i>We also had additional sources of revenue:</i>	
Other operating revenue	\$52.5
Federal Assistance Funding	\$28.8
Levy funds for programs	\$6.2
Levy funds for debt repayment.....	\$22.8
TOTAL NET REVENUE	\$969.1
EXPENSES	IN MILLIONS
<i>In 2023 we had expenses for:</i>	
Salaries and benefits.....	\$666.3
Supplies, services and other operating expenses.....	\$273.6
Levy supported programs.....	\$21.6
Depreciation expenses.....	\$62.7
Interest expense and other non-operating expenses	\$15.0
TOTAL EXPENSES	\$1,039.2
NET INCOME	IN MILLIONS
TOTAL NET INCOME AVAILABLE	(\$70.1)
After expenses, for improvement of services and repayment of debt	

EvergreenHealth Monroe realized a net income of \$6 million and invested \$9.8 million toward community benefit services, including charity care and subsidized services, while also contributing \$1.2 million toward capital projects.

Community Benefit		
	PERCENTAGE	IN MILLIONS
Charity Care Costs.....	4.1%	\$0.4
Subsidized Medicaid Costs	69.4%	\$6.8
Subsidized Health Services.....	26.5%	\$2.6
TOTAL.....	100%	\$9.8

2023 Gross Revenue Sources		
CATEGORY	PERCENTAGE	IN MILLIONS
Medicare	35.6%	\$71.6
Commercial	34.0%	\$68.5
Medicaid	21.7%	\$43.7
Government.....	2.1%	\$4.3
Self Pay	4.2%	\$8.5
Tax Revenue for Levy Programs.....	1.4%	\$2.9
Other Operating.....	0.9%	\$1.8
TOTAL GROSS REVENUE	100%	\$201.3



2023 Significant Capital Projects	
	IN MILLIONS
PRIMARY PROJECTS:.....	\$1.1
Upgrade Infrastructure for EPIC	
OTHER:	\$0.1
Building Automation Control update	
Ultrasound Machine	
TOTAL:	\$1.2

2023 EvergreenHealth Monroe Revenues and Expenses	
SOURCES OF REVENUE	IN MILLIONS
<i>In 2023, we billed patients for:</i>	
Inpatient and outpatient care	\$196.6
Less amounts written off for discounts to payers including commercial insurances, Medicare and Medicaid	\$128.1
Less amounts written off to charity care and bad debt	\$11.6
Net Revenue.....	\$56.9
<i>We also had additional sources of revenue:</i>	
Other operating revenue	\$1.8
Levy operations	\$2.9
Levy funds for debt repayment.....	\$2.3
Behavioral Health Workforce Stabilization Funding	\$1.3
TOTAL NET REVENUE	\$65.2
EXPENSES	IN MILLIONS
<i>In 2023, we had expenses for:</i>	
Salaries and benefits.....	\$32.3
Supplies, services and other operating expenses.....	\$23.3
Depreciation expenses	\$2.8
Interest expense and other non-operating expenses	\$0.8
TOTAL EXPENSES	\$59.2
NET INCOME	IN MILLIONS
TOTAL NET INCOME AVAILABLE	\$6.0
After expenses, for improvement of services and repayment of debt	

Message from the Chief Philanthropy Officer and Board Chair



Dear Friends,

Welcome to the EvergreenHealth Foundation Community Report! It's our pleasure each year to share the progress and highlights of supporting high-quality care for patients and their families on the Eastside. We're proud to be a part of a community-owned health system, dedicated to both patient care and investing in the health of the wider community.



Philanthropy is essential to meeting the needs of our patients and their families. As economic factors put financial pressure on the health care industry, community philanthropy matters more now than ever. Our community came together in the spirit of philanthropy in 2023, and that momentum has continued through today. With your support, we've made significant strides in improving health care access, investing in the latest in advanced medical technology, all in order to enhance the well-being of those we serve.

In these pages you'll read about the Ferguson family, longtime friends and supporters of EvergreenHealth for three generations and counting. Bob and Shirley Ferguson, founding owners of Ben Franklin Crafts and Frames in Redmond, have been involved with the Foundation for more than 20 years in a variety of roles. They never could have imagined that involvement would one day benefit their family in some unexpected ways.

Read about their triplet granddaughters born at EvergreenHealth and the dedication of our NICU Triplet Room on page 17. We are so fortunate to live in a community that values excellence in caring for infants and keeping them close to home for intensive care.

Finally, we would like to thank our Board of Commissioners for their commitment and leadership as we strive to support the health system in meeting the needs of our growing and diverse region.

Sincerely,



Lori Kloes

Lori Kloes
Chief Philanthropy Officer



Anthony Ambrose

Anthony Ambrose
Chair, Board of Trustees

2023 EvergreenHealth Foundation Board of Trustees

Anthony Ambrose
Data I/O
Board Chair

Megan Baumgartner
SCS Financial
Trustee

Sandy Cairns
Wells Fargo
Trustee

Drew Copitzky
Community Volunteer
Trustee

Shawn D'Amelio
Community Volunteer
Trustee

Doug Edlund
PAC Promotions
Trustee

Bob Ferguson
Ben Franklin Crafts and Frame Shop
Trustee

Suzanne Greathouse
TierOne Performance Consulting/
REPSVR
Trustee

Gurleen Gulati
City of Seattle
Trustee

Molly Hill
Community Volunteer
Trustee

Leah Hoge
Symetra
Trustee

Jason Holloway
Heritage Bank
Trustee

Matt Larkin
ROMAC Industries
Trustee

Vicky Nollette
Community Volunteer
Secretary

Kelly Williams
Optimum Value Advisors
Finance Chair

Ex Officio Members

Chad Bentsen, MD
EvergreenHealth Medical Staff
President

Jeff Cashman
Community Volunteer

Rebecca Hirt
Community Volunteer

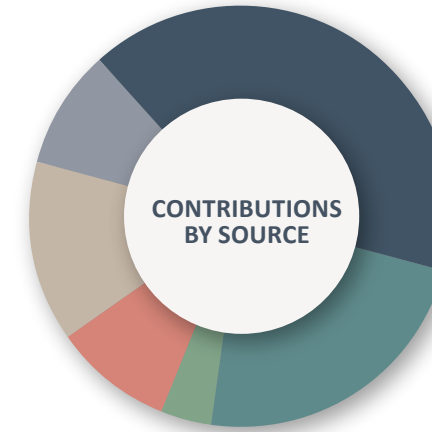
Lori Kloes
EvergreenHealth, Chief Philanthropy
Officer

Tim McLaughlin
Community Volunteer

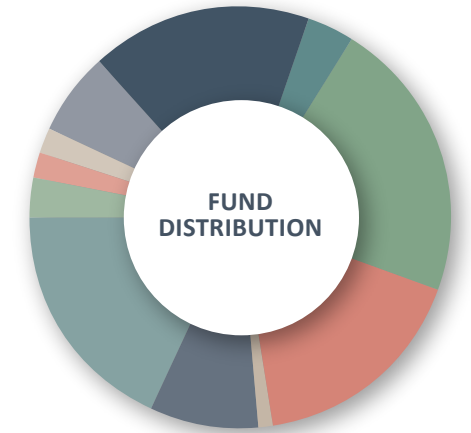
Eric Taylor, MD
EvergreenHealth

Jeff Tomlin, MD
EvergreenHealth, CEO

2023 EvergreenHealth Foundation Financial Report



CATEGORY	PERCENTAGE
Individual	41%
Corporation	23%
Donor Advised Funds	4%
EvergreenHealth Staff	9%
Foundations	14%
Associations/Organizations/ Estates/Trusts	9%
TOTAL	100%



FUND NAME	PERCENTAGE
Evergreen Gala	17.2%
Radiation Oncology/Cancer	3.8%
Hospice	21.9%
Evergreen Fund	17.0%
Give Together, Grow Together	1.1%
Women's & Children's	8.3%
Nursing Excellence	18.5%
Quality & Infection Control	3.0%
Neurosciences	1.9%
Emergency	1.9%
Other	6.4%
TOTAL	100%

Balance Sheet

Assets

CASH	
\$7,027,854	Total Cash
\$654,023	Total Pledge Receivables
\$67,783	Total Prepaid Expense
INVESTMENTS	
\$5,252,616	Total Investments
\$13,002,276	TOTAL ASSETS

Liabilities

LIABILITIES	
\$385,713	Total Liabilities
FUND BALANCE	
\$12,616,563	Total Fund Balance
\$13,002,276	TOTAL LIABILITIES AND FUND BALANCE

Foundation Donors

Thank you to the individuals, families, foundations and businesses that supported EvergreenHealth in 2023.

\$250,000+

Mike Hallman
Halvorson Family
PACCAR Inc.

\$100,000 to \$249,999

The Phil and Katie Carter Family
Estate of Pamela A. Heselgrave
Weidner Foundation
Jack and Betty Wockner Charitable
Fund
Christopher and Margery Yetman

\$25,000 to \$99,999

Anonymous (3)
Adler Giersch Law Firm
Aldrich and Associates
Anthony Ambrose and Kelly Flynn
The Anderson Foundation
Bellevue Healthcare
Estate Of Bernard J. Butler and Anna
Caroline D. Butler
Al and Donna DeYoung
Bob and Shirley Ferguson
Dr. Mark and Jayme Freeborn
Eugene and Ruth Freedman Family
Foundation
Keyes Foundation
Derek Luhn and Jennifer Hallman
Microsoft Matching Gifts Program
Linda and Jerome Paros
Skony Resources, Inc.
Dr. Jeffrey and Merrie Tomlin
Connie L. Wahlin Trust
Dr. Hope Wechkin and Christopher
Shainin
Robin E. Wechkin
Whidbey Coffee Company

\$10,000 to \$24,999

Anonymous
American Cancer Society
Bella Baby Pacific, LLC
Christopher and Darla Bredeson
LaDonna Carlson
Cashman Family Charitable Fund
Cigna
James A. Crim
Epic Systems Corporation
Evergreen Emergency Services
EvergreenHealth Medical Staff
First Choice Health
Fred Hutchinson Cancer Center
Irene G. Giustina
Gobo Enterprises, LLC
Google LLC
Hall Render Killian Heath & Lyman
Laboratory Corporation of America

Matrix Anesthesia
Merchants Credit Association
Peter and Jana Norman
NuWest Group
Kim and Stephen Oberto
The Olsen Foundation
Timothy and Mary Ord
Pacific Office Automation
Dr. Ettore and Setareh Palazzo
Parker, Smith & Feek, Inc.
Pediatrix Medical Group - Eastside
Maternal Fetal Medicine
Pediatrix Medical Group - Seattle
Neonatology
PRK Livengood
Radia, Inc.
Regence BlueShield
Nancy and Ben Remak
The Schuler Family Foundation
Stephen and Carol Skony
Karen Snapp
Commissioner Virgil and Ms. Kelly
Snyder
Dr. Eric Taylor and Ms. Sheena Aebig
Wise Hospice Options
William E. Wockner Foundation

\$5,000 to \$9,999

Anonymous
Andrew and Michelle Baker
Aon
The Banks Family
Jeanne Barker
Skony Resources, Inc.
Bloodworks Northwest
CarePartners Living
Jeff and Judy Cashman
The Cooks Foundation
Davis Wright Tremaine, LLP
Delta Dental of Washington
Dennis and Deborah DeYoung
John and Diane DeYoung
Shannon and Michael Ellis
Neil and Allicia Ferguson
Firmani + Associates
Mark Firmani and Joy Portella
Monique and Adam Gablehouse
John and Kim Gray
Gretchen and Lyman Hull
Jessika and Ryan Groce
Heritage Bank
Dr. Wayne and Deborah Hill
Helge Hoeing
Dr. Karlyn and Daniel Huddy
Intercare Insurance Solutions
Nancy Johnson
JPMorgan Chase Bank
Kurt Klabunde
Lori and Daren Kloes
Knowtion Health
KPMG LLP

Legacy Group Interiors
Ali Naqvi
NBBJ Architecture
Northwest Synergy, Inc.
Nuvasive
Payden & Rygel Investment
Management
Premera Blue Cross
Jack Price
Professional Credit
ROMAC Industries, Inc.
Ron and Susan Runyon
Michele Rutherford
Dianne and Patrick Schultheis
Mary and Randy Shepler
Mark and Sue Shinstrom
Drs. Narender and Rekha Sood
Drs. Lloyd Stambaugh and Maria Chong
Dean and Christine Stensby
Dr. Scott and Rebecca Amos Stuart
Thomas Cuisine
Laurie Willman
Dr. Joseph and Kyla Woodward

\$1,000 to \$4,999

Anonymous (12)
Richard and Donna Adler
Aegis Living Corporate
Gregg and Kirsten Aoyama
Holly E. Baker, RN
Barton Family Funeral Service
Ted and Florence Begun
Dr. and Mrs. Chad M. Bentsen
Reed Bettinger and Laurel Z. Rich
Betty Johnson
John and Erika Bigelow
Dr. Kurt and Julie Billett
Boeing Company Gift Matching
Program
Edith Borden
Pat Braddock
Keith Brandt
The Brekke Family
Don and Meg Briggs
The Britts Family
Drs. John and Kimberly Brockenbrough
Peggy Brown
Pam Bryant
Dr. Michael Bundesmann and Mrs.
Merkys Gomez
Drs. Daniel and Cynthia Burdick
Greg and Karen Burgess
William Bush
Gary Caldwell and Jo Iacofano
Liz Caluori
Pete and Marianne Caputo
Rick Chatterton and Steven Franz
Dr. Angela Chien
Russell and Claudia Christensen
Monica Chun

Christina Cornwall
Cindy Craigen-Phelps
Crane Fund for Widows and Children
Dr. Chad and Lilya Crystal
Diane Dake
Dr. Eric and Wendi Demers
Design Build Institute of America
J. Donald and Merrily Dicks
Dignity Memorial
Joycelyn Dorsey
The Dreizler Family
Jodi and John Duggan
Robert Elzig
Guy Farmer and Family
David Ferguson
Barb Follett
Bruce Forstall and Christine Bahn
Jeffrey and Kelly Friedman
Stephanie Garber and David Collins
The Gardens at Town Square
Bill & Melinda Gates Foundation
Katharyn Alvord Gerlich
Olivia Gonzalez
Oscar Gonzalez, MD
Estate of Dorothy Govern
Anne Grant
Estate of Dexter Ord Haas
Nancy and Darrell Hamilton
Brenda and Charles Handley
Gary and Carrol Harris
Heather and Michael Hatada
Dr. Danielle and Ryan Henderson
Shelly and Neil Henderson
Brett and Shelia Herner
Drs. Jennifer and Nathan Hines
Rebecca and Tom Hirt
Dr. Priscilla Hoang and Mr. Adrian Synal
Dale and Gail Hoover
Kevin Hopper
Debbie and John Howie
Marilyn Hoyt
Richard and Janet Hunter
Dr. Stephen G. and Jan Hyde
Debra Ingersol
Insidesource
Interim Healthcare of Bellevue
Tara James and Timothy McRoberts
Roan Kang
Elizabeth Keeshan
Greg B. and Lauri King
Patricia Kinnaird
Dr. Lindy Klaff and Scott Ecker
Kristen Krebs
Sandra Kreider, RN
Eric LaFrance
Rosemary and Fred Langford
Carolyn Laurenzo
Dr. Yung and Christina Lee
Drs. David and Laurin Likosky
Dr. Sharukh and Misha Lokhandwala

David B. and Charlotte J. Lomet
Douglas MacLachlan
Mary Dee McCann and Family
Stephanie McCann
Sarah McGuire
Tim and Priscilla McLaughlin
Richard and Jennifer Meeks
Dr. Michael and Leah Mena
Michael's Subaru of Bellevue
Dr. Kristina Mitchell and James Harrison
Estate of Elizabeth A. Moses
Ronald and Sally Jo Nardone
Dr. Holly and Michael Nelson
Ken and Andree Nelson
Dr. Nancy J. and Larry Neubauer
Annie Nguyen-Vermillion, MD
Vicky Nollette
Mark Norton
John O'Donnell
Jaja Okigwe and Teresita Carral
Joe and Jeannie Olmstead
P2S Inc
Patti Payne
Debbie L. Payton and Jeffrey M. Cox
Peloton
Barbara Perman
Jack Peters and Claire Tucker
Jill Peterson
Randal and Donna Peterson
James and Jessica Pierson
Dr. Charles A. and Barbara Pilcher
Meg and Bridget Powers
Rolin and Megan Pruyn
Rami Rafef and Niveen Mattar
Estate of Barbara B. Rambo
Redmond Firefighters Benevolent Fund
Carrie Reichel
Dr. Francis X. and Judy Riedo
Ronald Roberts
Adam and Stephanie Rothenberg
Marco Salazar, MD
Matt and Beth Salit
Lane Savitch
Alex and Gena Schirer
Benn Schreiber and Liz Hunt
Darren and Christi Schwend
Lynne Singer
Lauren Smilde
Laura and John Smiley
Mona Solomon
Deb and Brian Stemmerman
Nancy and Tom Stewart
Kimberly and Allon Stone
Ernie and Paula Taylor
Joyce and Jordan Roderick
Andrew F. Thurman, MD
Norman Tong
Shirly A. Torpin and Family
Ken Trowbridge
Ted and Kathy Truscott

Dr. Andrew and Bobye Turella
Dr. Joseph E. and Virginia Turner
Steve and Ruth Turner
Estate of Bernice E. Tutt
Alan and Greta Upshall
Elisa M. Vila
Visiting Angels
Mark and Susan Vossler
Lynda Watson
Rodney Weaver
Susan Wenski
John J. and Joan White
Jeffrey Wildey
Kelly Williams
Megan and Sam Wirsching
Scott and Melissa Wiswall
Molly and Dave Wolf
Woodinville Pediatrics Clinic, PLLC
Amadou and Meleshia Yattassaye
Zobrist Family

\$500 to \$999

Anonymous (6)
Lucy Acker
Donna Anderson
Molly Anderson
Deanna Arnold-Frady
Meredith A. Auerbach
Julie Barclay
Sue Bass
Bennett Bigelow & Leedom P.S.
Kevin and Katie Booth
Dexter Borbe
Steven Bourque
Marilyn J. Braarud
Doug and Amy Brown
Lynn Brown, RN
Dr. Scott and Ginger Burks
Robin and Debra Campbell
Nina Cantrell
Jenny Churas
Kirsten Clark
Thomas Condon
Susan Corning
Robert and Gail Cranmer
Stephen and Dani Cuplin
Jessica Cutler
Shawn and Chris D'Amelio
Dr. Claude V. DeShazo
Juliann Dillhoff
Cathy Dompier
Deann and Peter Edgers
Grant and Debbie Faubion
Lindsey Foley
Theresa and Todd Foley
Pete Fortman
Debra Francis
Ida Freilinger
Alex Gibson

Robert and Michele Gilb
Diane and William Ginthner
glassybaby LLC
Maria Gonzales
Danielle Goodson
Marjorie Gorodko
Karen Grace
Jessica Granger
Ann Green, RN
William Griffin
Marilyn Guthrie
Timothy Hackbart
Adam and Paige Hagen
Julie and John Halata
Penney Hall
Kevin and Patty Hansen
Joy and Kurt Hanson
Jamie J. Haraden, ARNP
Rohan and Sucheta Hattiangadi
Holly Hayes
Daria and Ben Heimerman
Kristi and Todd Herriott
David Hilgers
Leah and Ryan Hoge
Semonti Hossain
Deborah Huang
Jakob Huber
Cynthia Johannes
Ann Johnson
Jane Kakaley
Baljinder Kaur
Linda Kenworthy
Nicole Kihlman
Dr. Carolyn R. Kline and Mr. Stephen
Sharpe
Judy Klingman
Rita Kluck
Rachel Knight
Angelika T. Koch-Leibmann, MD
Karen Liebel
Pauline and Ping-Yu Liu
Linda and Clinton Logan
Deena Lorraine
Allison Maidman and Michael Tabb
David Manning
Dr. Nancy A. and Jeff Marshall
Brenda McCue
Shelly McDiarmid
Deanna McKinzie
Mary Beth Menagh
Anna Menne
Katherine Mihalek
Jack Miller
Tina Millican
Lisa Mulligan
Xiomara Munoz, MD
Ken Muse
Craig and Betty Nelson
Abby and Wes Newton
Moira Opalka

Eric Pan, MD
Drs. Raymond D. Park and Mazie Park
Dr. Komal Patil-Sisodia and Harshal
Sisodia
Ann and Jon Peterson
Dr. Terrence A. Pheifer and Beatrice J.
Pheifer
Sheri and Tracy Pierce
Derek Rae
Susan F. Raunig and Dr. Gregory Roeben
Jared W. Remington, MD
Richard Rhoads
Konnie Rincon
Nanette and Bill Rosenthal
Evangeline Saiz
Karen Sandeen
Caroline Blume Sanderson and Eric
Scott Sanderson
Dr. Adam and Reed Sangeorzan
Ashley Schofield
Bret and Sandra Seefeld
DeWayne Sennett
Russell Shaw
Zoa Shumway
Howard L. Sitcov, MD
Ingrid Skacel
Sue Smiley
Dr. Sheila Smith
Deborah Snell
Starbucks Matching Gifts Program
Diana and David Suzuki
Tina and Floyd Swift
Jason Talavera, MD
Jeanna L. Taylor, RN
Kathleen Terry
Gillian Thompson
Cherry L. Tinker
Lauren Trocano
Kate Tylee Herz and Matt Herz
Phyllis Tyson
Richard Upjohn
Philip Vande Pol
Paul Vasuu
Robert Voiss
Anne Volk
Lori Walters
Megan Whitman
Katie Wichman
Joanne Wilkes
Dr. Jerrold C. and Deborah T. Willis
Mark Wimley
Fei Yuan
Dr. and Mrs. Ryan Zehnder
Cha Zhang
Junmei Zhao

A Family Commitment to Community Health

Bob and Shirley Ferguson have deep roots in our Eastside community. The couple founded Ben Franklin Crafts and Frames, then called Ben Franklin Variety, back in 1975. The store has grown into a staple of our Redmond community, but Bob and Shirley weren't satisfied simply running their small business – they have also prioritized giving back and investing in community health over the years.

Shirley got involved at EvergreenHealth nearly thirty years ago, volunteering first in the Leadership Redmond program and then as a Community Advisor for EvergreenHealth, where she still serves as an Honorary Trustee. Her nickname around the neighborhood is “the Evergreen lady,” and people in the community know to come to her with questions and to find resources about the care and services at EvergreenHealth. Bob has served on the EvergreenHealth Foundation Board since 2005.

“The culture at EvergreenHealth is so wonderful,” Shirley said. “We’ve enjoyed participating in the gala each year, whether it’s coordinating with winemakers from local wineries to organize the silent auction, or simply setting up tables and chairs – we jump in to volunteer however we can.”

Bob noted that they have seen hospital leadership and administration change over the years, which gives perspective on the organization as a whole. “I’ve worked with four EvergreenHealth CEOs now, and they have all been excellent – far above the industry standard,” Bob said. “Both the administrative and medical leadership at EvergreenHealth is second to none, and that commitment to quality is obvious throughout the entire organization.”

The Fergusons have two sons, David and Neil, who have taken over ownership and operations of the family business – as well as taking up the mantle of philanthropy and involvement in community health.

In 2003, Neil and his wife, Allicia, welcomed triplet daughters into the world at EvergreenHealth in Kirkland, where the infant girls received special care in the NICU.

Now, 21 years later, Bob and Shirley gave a gift in honor of their granddaughters to name the Triplet Room in the NICU. The family gathered at EvergreenHealth for a small dedication ceremony in July of 2024, and the family reminisced about the triplets’ time spent there, and the great care they received.

The Foundation also named the Ferguson Family the Spirit of Giving Awardees at the 2023 Gala in recognition of their time, talent, and generosity within EvergreenHealth and our entire community.

“I will never forget the support and kindness that the team at EvergreenHealth has shown to our family. It is a pleasure to continue a family legacy of giving and volunteering.”

– David Ferguson



The Ferguson family accepts the Spirit of Giving Award at the 2023 Evergreen Gala.

“EvergreenHealth is an amazing resource for our family. Twenty-one years ago, our triplet daughters were born at EvergreenHealth and spent time in the NICU. The nurses and team taught us not only how to take care of these young girls, but how to be great parents. What an amazing start to life. We owe the world to the EvergreenHealth team and couldn't be more thankful and appreciative.”

– Neil and Allicia Ferguson, parents of triplet girls born in 2003

Message from the Board Chair & Director



Dear Community Members,

As we reflect on the achievements of 2023, we are filled with gratitude and pride for the remarkable support from our community. Your contributions have played an instrumental role in advancing the health care services at EvergreenHealth Monroe, and we are excited to share the milestones we achieved this past year through the EvergreenHealth Monroe Foundation.

One of the standout moments of the year was our inaugural Spring into Recovery Breakfast. This inspiring event drew over 100 attendees who listened to powerful testimonies from patients whose lives have forever been changed with the drug and alcohol treatment program at our Recovery Center. The stories shared highlighted the transformative impact of our services and the essential role of community support in recovery.

In our ongoing efforts to enhance patient care, we made several critical investments. We acquired the life-saving LUCAS Compression Device, which is vital for patients experiencing cardiac arrest. Additionally, we completed the Emergency Department Refresh project, which included new sound-dampening curtains, new floors, updated patient waiting area furniture, and improved nurse workstations. These upgrades ensure a more comfortable and efficient environment for both patients and staff.

Our dedication to surgical excellence was further demonstrated by investing in new state-of-the-art equipment to support our growing surgery department. Investments were also made in new patient beds and stretchers, enhancing comfort and care quality for those we serve.

These accomplishments would not have been possible without the unwavering support of our community. Together, we are making a tangible difference in the lives of our patients and setting new standards for health care in our community.

We extend our heartfelt thanks to each of you for your continued generosity and commitment to EvergreenHealth Monroe. As we look forward to the future, we remain dedicated to our mission of providing exceptional care and fostering a healthier community.

Warm regards,



Bridgett Edgar

Bridgett Edgar, Chair
EvergreenHealth Monroe
Foundation Board of Trustees

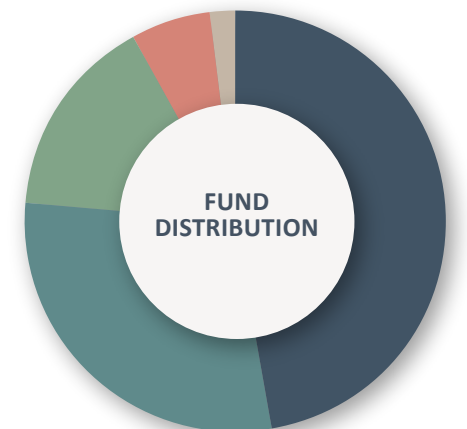


Blake Vintertun

Blake Vintertun, Director
EvergreenHealth Monroe
Foundation

2023 EvergreenHealth Monroe Foundation Financial Report

FUND NAME	PERCENTAGE
Progressive Care Unit	47.37%
Emergency Services Fund	29.09%
Greatest Need	15.59%
Recovery Center	6.11%
Other	1.84%
TOTAL.....	100%



2023 EvergreenHealth Monroe Foundation Board of Trustees

Janie Botting
Community Volunteer

Pat Castiglione
Community Volunteer

Susan Chatlos-Susor
Community Volunteer

Darrin Davis
Studio East

Petra Dungan
Community Volunteer

Bridgett Edgar
Pharm-A-Save

Dianne Forth
Community Volunteer

Patricia Fountain
Retired RN / Valley General

Heather Fulcher
Original Pilot House Coffee

Doug Hobbs
Evergreen Speedway

Torri Howard
Parker Smith & Feek

Kellie Jones
Horton + Associates

Stacy Morse
The Urban Art Preservation Project

Scot Noel
NOELEDGE Consulting

Allison Raduziner
Pilchuck Business Consulting

Derelynn Williams
Parker Smith & Feek

Sam Wirsching
Sam's Cats & Dogs

Ex-Officio Members

Stephen Gardner, MD
President of Medical Staff

Lisa LaPlante
EvergreenHealth Monroe Chief Administrative Officer

Blake Vintertun
EvergreenHealth Monroe Foundation Director

Alice Cabe
Snohomish Hospital Commissioner



2023 EvergreenHealth Monroe Foundation Donors

Thank you to the individuals, families, foundations and businesses that supported EvergreenHealth Monroe in 2023.

Benefactors \$25,000 – \$49,999

Employees Community Fund of Boeing Puget Sound
The Norcliffe Foundation
William E. Wockner Foundation

Sustainers \$10,000 – \$24,999

Coastal Community Bank
Evergreen Emergency Services
EvergreenHealth Monroe Medical Staff

Sponsors \$5,000 – \$9,999

Susan Chatlos-Susor and Tom Chatlos-Susor
Cutis Care LLC
EvergreenHealth Foundation
First Choice Health
Lisa M. LaPlante
Lynnette Lysten
Merchants Credit Association
Radia, Inc.
Stillaguamish Tribe of Indians
Dr. Jeff and Merrie Tomlin
Dr. Joel and Marisa Weber
Sam and Megan Wirsching

Advocates \$1,000 – \$4,999

Khalid Ahmed, MD
Aon
Bob and Linda Benson
Heather Beierle
Janie Botting
Boulder Care
Chris and Darla Bredeson
Eric and Samantha Britt
Genevieve Britt
Peggy Brown
Alice and Jim Cabe
Pat Castiglione
Rick Chatterton
Coin-O-Matic Vending, LLC
Debbie Copple
William and Susan Cross

Kevin Crowder
Dr. Chad and Lilya Crystal
Thomas Cuisine
DA Davidson
Davis Wright Tremaine LLP
Dr. Brian and Julie Dial
Rachel Donnelly
Petra and Dan Dungan
Dr. Michael S. and Janelle Eickerman
Evertrust Foundation
Derelynn and Jeff Ferri
Dianne and Richard Forth
Foster Garvey PC
Dr. Mark and Jayme Freeborn
Katy Fridrich
Monique Gablehouse
Karen Gahn
Hillary and Jeff Galyean
Megan Glasgow
John Gepford
Shidan and Scott Greene
Jessika and Ryan Groce
Becky Hasart
Bradley Hesselgrave
Felicia and Stephen Hill
Douglas and Traci Hobbs
Torri and Jim Howard
Zachary Humphreys
Jamieson Architecture
Jett Medical
Rachel and Zakk Johnson-Shriver
Kellie and Brent Jones
David Kinard
Dr. Michael S. Kincaid and Mrs. Susan Li
Lori and Daren Kloes
Deborah and James Knight
Kristen Krebs
LabCorp
Landcare
Leah Lubresky
Macdonald-Miller
Dr. Patrick and Kristin Maher
Douglas Mailman
Stephen and Susan Matuschak
Marty McGarrigle
Medical Solutions
Richard Meeks

Sara Mendoza
Stella Moeller
Monroe Anesthesia Physicians, PLLC
Mosher
Scot and Janan Noel
Pacific Office Automation, Inc.
Ettore Palazzo, MD
Parker, Smith & Feek
Ann Peterson
Shelly Peterson
Pharm-A-Save of Monroe
Physicians Insurance
George Pierce
James Pierson
Dr. Charles A. and Barbara Pilcher
Piper Sandler & Co.
Diane Pollari
Premera Blue Cross
Nancy and Ben Remak
Stacey and Alan Riden
Dr. Adam and Stephanie Rothenberg
Sam's Cats & Dogs, Naturally
Susan and Tom Shjerven
Robin Stake
Stephen and Laurie Stock
Dr. Chuck and Sue Strub
Carol Taylor
Dr. Eric Taylor and Ms. Sheena Aebig
Deborah Tombs, RN
Mary and Randy Shepler
Mayor Geoffrey and Lara Thomas
Umpqua Bank
Elisa Vila
Terry and Linda Voorhees
Bryan Wiederspohn
Lilin Wu, MD

Partners \$100 – \$999

Deanna Allaway
Judith Anderson
Jenny Arnold
Jorin Arriola
Tamara Axtman
Kelly Backstrom
Tammy Berry

Eunice Binz
Gwen Blake
James and Lynn Bloss
Chris Bosworth
Mary Bowles
Ronald and Teresa Carey
Paul and Kathy Challancin
Jenny Churas
Jenny Coan
Staci Cogar
Andrea Compton
Debra Dane
Darrin Davis
Stefanie Derick
Tamara Dimitrov
Josh Donnelly
Bassim and Kara Dowidar
Bridgett Edgar and Larry Barnes
Candy Ermey
Don Fairley
Jeffrey Faragher, MD
Stephanie Fitzhugh
Shannon Force
Patty Fountain
Patricia Fox
Angel Fyre
Patricia Garner
Avi and Kaitlin Goodman
Kittie Graham-Dunn
Weldon Grant
Melissa Gray
Jackie Gregory
Sean Guimond
Mike and Leigh-Ann Gutmann
David and Kimberly Hajek
Pam Haley
Dr. Kevin and Jenay Hanson
Mark Hawley
May and May Heichel
Marylynne Henry
Brett and Sheila Herner
Jeni and Joshua Herschlip
Cindy Hill
Mickey Hill
Danni and John Hollingworth
Peter Horvath
Adam Jack
Connor Jenkins
Pat Job
Jeff Jolley

Dain and Kimberlee Jones
Shawn Kish
Jessica Klump
Deanne Koch
Kroger
Brian Lake
Jim Lee
Traci Lockhart
Jamie MacKenzie
Bethany Martinell
Erica McCallum
Danielle McConnell
Dianne McNulty
Jerry and Michele Metcalf
Nicholas Miller
Don Miller
Rosemary and Bill Mitchell
Kathleen Morris
Stacy and Lans Morse
Javier and Robyn Nazar
Amanda O'Neill
Michael Palmer
Jason Parks
Katherine Piekos
Mike and Kate Podobnik
William and Lucille Prenevost
Patricia Presley
James and Vanessa Reyna
Minga Rice
Barbara Ritzie
Deborah Rivas
Rotary Club of Monroe
Bonnie and Phil Routsis
Alex Sandoval
Cynthia and Cynthia Sfanos
Diane Shubert
Anita and Mark Simonton
Michael and Susan Skillen
Jay Smalls
Kristian Stone
Shawn Sundet
Serena Swarthout
Margaret Szymanski
Kay Taylor
Eleonor Tossey
Blake and Kaitlin Vintertun
Mark Wimley
Whitfield's Licensing
Katy and Brad Woods
Gina Wunderlich

2023 Gifts in Kind

Alaska Airlines
Bruce Albat
All Star Fishing Charter
Armstrong Family Winery
The Art of Touch
Auclair Winery
Auntie Anne's
Balloon Depot
Bebe Anne Designs
Ben Franklin Crafts and Frames
Benjarong Thai Restaurant
Chris Bensen
Blanc & Rouge
Board & Brush
Bob's Corn and Pumpkin Farm
Bush House Inn
Buzz Inn Steakhouse
Cairdeas Winery
Cascadia Inn
Collector's Choice Restaurant
Complete Acupuncture
Covington Cellars
DeLille Cellars
Diamond Knot Brewing Company
Bridgett Edgar and Larry Barnes
Minga Rice
Elephant Seven Winery
Espresso Chalet
Evergreen Speedway
EvergreenHealth Monroe Administration
EvergreenHealth Monroe CCU Staff & Nursing Supervisors
EvergreenHealth Monroe Dietary & Environmental Services
EvergreenHealth Monroe Hospital
EvergreenHealth Monroe MSTU/PCU
EvergreenHealth Monroe Recovery Center
EvergreenHealth Monroe Surgical Services
Fairfield Inn and Suites
Aaron Feik
Derelynn and Jeff Ferri
Fire & Vine Hospitality
Flat Iron Gallery

Patty Fountain
Friends of Monroe
Gramercy Cellars
Grilla Bites
Guardian Cellars
Herbfarm Restaurant
Torri and Jim Howard
JM Cellars
Tod and Margaret Johnson
The Keg
Lisa M. LaPlante
Lodge at Stehekin
Long Cellars
Looking Glass Coffee
Mary Klump Studio
Mi Tierra Monroe
Milkwood Custom Furniture
Monroe Fish and Chips
Museum of History & Industry MOHAI
Scot and Janan Noel
The North Fork Kitchen
Pharm-A-Save of Monroe
Kaitlyn Picard
The Pizza Coop & Ale House
Puget Sound Rum Co.
Rebel Mels Fitness and RMF CrossFit
Sam's Cats & Dogs, Naturally
Seafair
Seattle Aquarium
Seattle Mariners
Seattle Shakespeare
Seattle Theatre Group
Shine Flower Farm
Skip Rock Distillers
Sky River Bakery
Slidewaters Waterpark
Snohomish Flying Services
Sultan Thai
Susan Chatlos-Susor and Tom Chatlos-Susor
The Woodshed Espresso
TopGolf
Tulalip Resort Casino
Tuscano's Italian Kitchen
The Village Theatre
Blake and Kaitlin Vintertun
Tito's Vodka

Board of Commissioners



EvergreenHealth Board of Commissioners for 2023



Nancy Stewart*
Position #1 representing Bothell, Duvall, Woodinville



Rebecca Hirt
Position #2 representing Kirkland, Kenmore



Tim McLaughlin
Board Secretary
Position #3 representing Redmond, Sammamish



Charles Pilcher, MD
Position #4 – At-large



David Edwards
Position #5 – At-large



Jeff Cashman*
Position #6 – At-large



Virgil Snyder
Board Chair
Position #7 – At-large

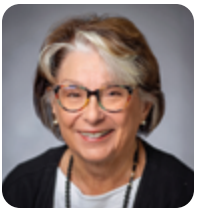
Snohomish County Public Hospital District #1 Board of Commissioners for 2023



Alice Cabe*
Board Chair
Member since 1994



Chuck Strub, MD
Board Secretary
Member since 2014



Dianne Forth
Member since 2023



Karen Gahn*
Member since 2020



Steve Matuschak
Member since 2014

*Denotes member of the Alliance Governance Board, which provides local governance to EvergreenHealth Monroe, and consists of members from King County Public Hospital #2 (EvergreenHealth), Snohomish County Public Hospital District #1 (EvergreenHealth Monroe) and the CEO of EvergreenHealth.

Best Maternity Hospital by Newsweek

EvergreenHealth Medical Center has been named among America's Best Maternity Hospitals by Newsweek for 2024.

High-quality maternity care, provided from pregnancy through birth and postpartum, is key to the long-term health of newborns and people who give birth. Given that maternity care is a major component of health care, Newsweek and Statista, the world-leading statistics portal and industry ranking provider, have partnered for the third time to identify America's Best Maternity Hospitals in 2024.

EvergreenHealth also supports you after you give birth with our Parent-Baby Classes. Sign up today!



Are you called to care for your community? Consider joining our team!

EvergreenHealth is hiring for a range of positions across the hospital system. Learn more at www.evergreenhealth.com/careers.

Our team is driven by the mission of advancing the health of neighbors, friends and families. We emphasize collaboration and teamwork to quickly respond in meeting the ever-changing demands of the health care environment. Our hospital system is filled with caring and compassionate people, and we will continue to lead the charge for high-quality, safe, and cost-effective health care for all within our community. We care deeply for the well-being and safety of our employees, and we pride ourselves on being an employee-focused and patient-centered organization.



Get our free, monthly healthy lifestyle e-newsletter with helpful tips and news from EvergreenHealth doctors to help you live and feel well!



Sign up today at www.evergreenhealth.com/newsletter

EvergreenHealth complies with applicable federal, state and local civil rights laws and does not discriminate on the basis of any protected status under the law.

Español (Spanish) EvergreenHealth cumple con las disposiciones vigentes de leyes aplicables de derechos civiles, federales, estatales y locales y no discrimina en función del estatus que es protegido bajo la ley.

(Chinese)
注意: 如果您使用繁體中文, 您可以免費獲得語言援助服務。請致電 425-899-1000 (TTY: 425-899-1000)。



For more information, contact EvergreenHealth by email at patientrep@evergreenhealth.com.

2024 EVERGREENHEALTH BOARD OF COMMISSIONERS

VIRGIL SNYDER
2024 Board Chair
Position #7
At-large

NANCY STEWART
Position #1
Bothell | Duvall | Woodinville

SUZANNE GREATHOUSE
Position #2
Kenmore | Kirkland

NORMAN SEABROOKS
Position #3
Redmond | Sammamish

CHARLES PILCHER, MD
Position #4
At-large

ROBIN CAMPBELL, PHD
Position #5
At-large

JEFF CASHMAN
2024 Board Secretary
Position #6
At-large

You may contact the Commissioners by email at CMScairpon@evergreenhealthcare.org.

EDITOR
EvergreenHealth Marketing and Public Relations Group and Firmani + Associates Inc.

PHOTOGRAPHY
Keith Brofsky

DESIGN
SJ3 Design Studio

PRODUCTION
Arscenia

EvergreenHealth Monitor is published as a community service by EvergreenHealth. Its contents are not intended to replace professional health care. See your health care professional for information relevant to your medical history.

EvergreenHealth is an equal opportunity employer and service provider.

For career opportunities at EvergreenHealth, visit our website at www.evergreenhealth.com/jobs.