

EvergreenHealth Nursing Professional Practice Model

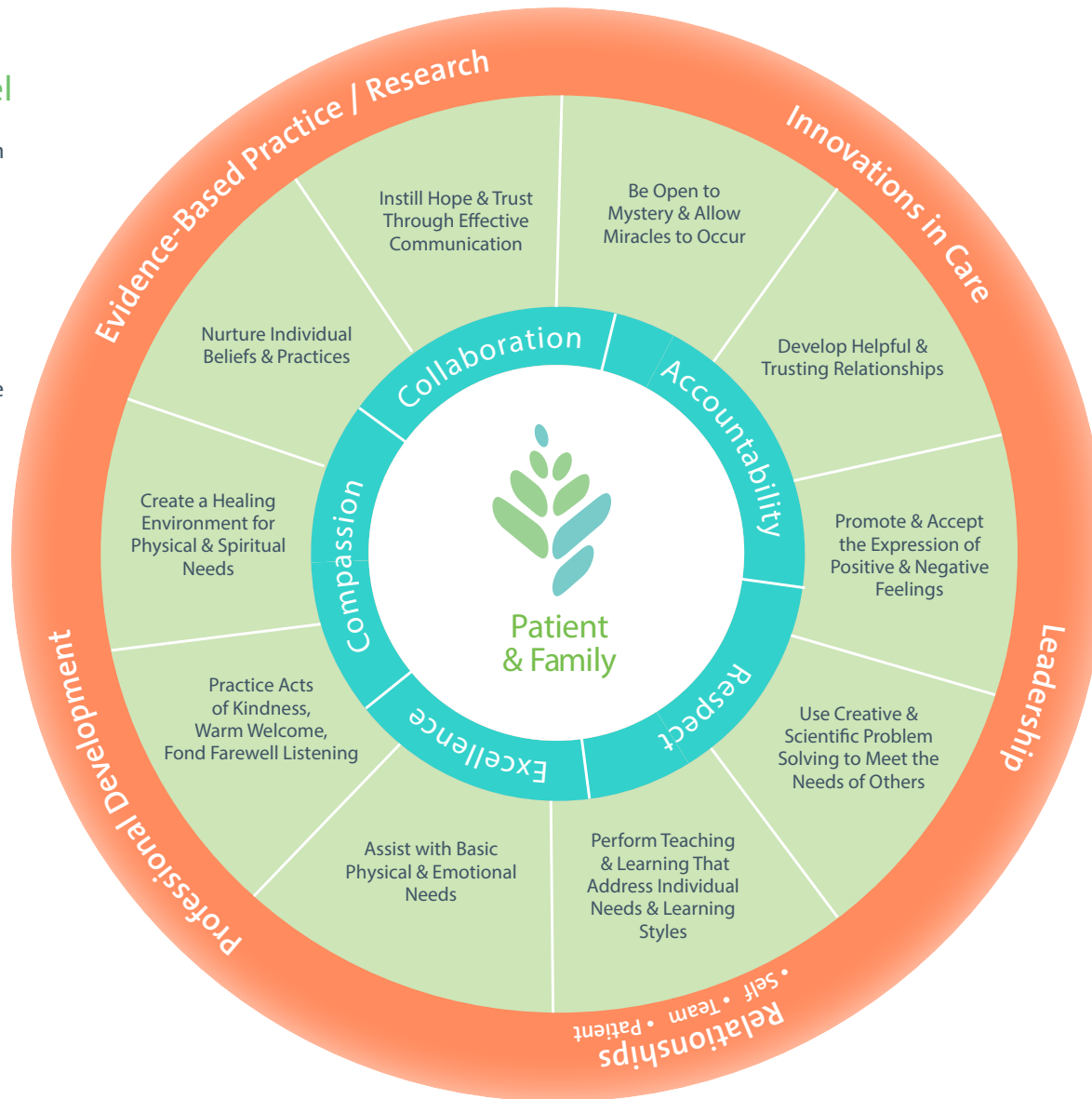
Compassion C.A.R.E.

Essentials of the Model

Center Circle | The EvergreenHealth values guide our relationships by demonstrating Compassion, Collaboration, Accountability, Respect and Excellence.

Inner Circle | Represent Jean Watson's 10 Carative Factors which guide our behaviors of putting care into action.

Outer Circle | Represents the key elements of Nursing Professional Practice at all levels of Nursing at EvergreenHealth. These include innovators in care, leadership, professional development and evidence-based practice/research and relationships. There are three important relationships — self, team & patient/family. Most valuable and first is to have a good relationship with self, then team which leads to synergy in the patient/family relationship.



Our Values

Caring Behaviors that Guide Our Relationships

Compassion | Empathy, caring for mind, body and spirit, honoring the person, acts of comfort and kindness, seeking to understand.

Collaboration | Recognition of other disciplines work as we work together as a team to achieve shared goals.

Accountability | Responsible for our actions and outcomes to improve the quality, safety and experience of all we encounter.

Respect | Maintains healthy relationships through an appreciation of difference in cultural beliefs and values, while actively listening.

Excellence | Pride and passion for lifelong learning and improvement, professionalism, embracing challenges with flexibility to accept and promote change, while exceeding expectations through teamwork & innovation.